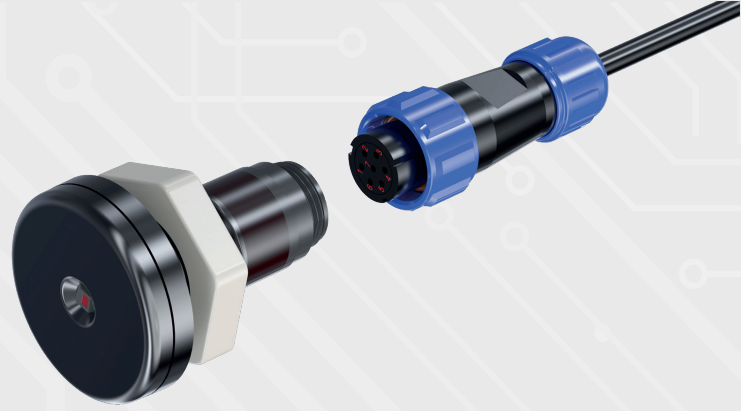


# IR-250



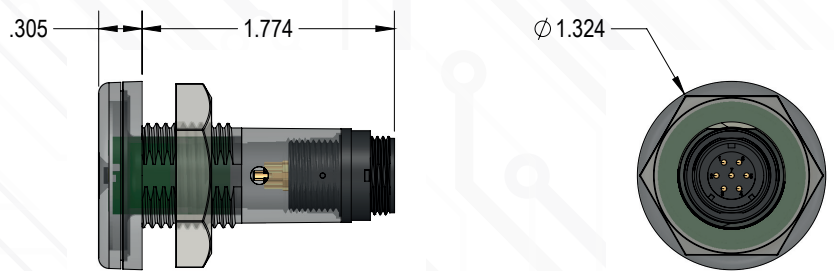
## INFRARED TEMPERATURE SENSOR

### Features:

- Non-contact infrared temperature measurement of surface temperatures
- Provides both surface & ambient temperatures
- Digital I<sup>2</sup>C interface for reliable data transmission
- Factory calibrated for food safety ranges
- Accurate from -20°C to +200°C (object)
- Compact & easy to clean design
- Renau Cloud & Wireless Sensor Module compatible
- Fully encapsulated & waterproof
- Low power consumption (<2.5mA)

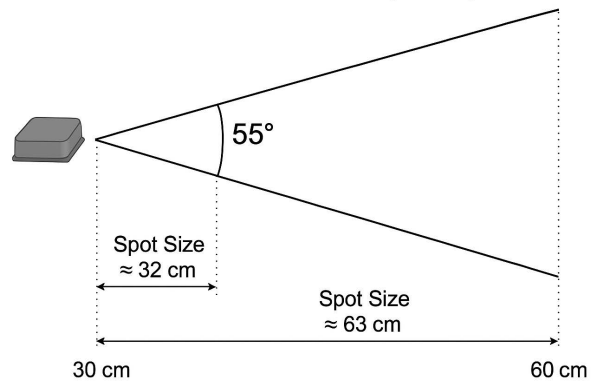
### Technical Specifications:

- **Measurement Range:** -20°C to +200°C
- **Ambient Operating Temperature:** -20°C to +85°C
- **Accuracy (typical):** ±0.5°C (for 0°C to 50°C range)
- **Field of View:** 55° (approx. 1:1 spot-to-distance ratio)
- **Effective Distance:** 30–60 cm (12–24 in) for large uniform surfaces
- **Spot Size:** ~32 cm at 30 cm, ~63 cm at 60 cm
- **Digital Interface:** I<sup>2</sup>C, 3.3V or 5V compatible
- **Resolution:** 0.02°C
- **Response Time:** <1 second
- **Power Supply:** 2.4V to 3.6V DC
- **Average Current Draw:** <2.5 mA during measurement



Dimensions:  
1.324" x 2.079"D

### Field of View (FOV)



### Warranty:

- Every Renau product is thoroughly tested at numerous stages of production and comes with an extended three (3) year warranty.



We do more than design. We invent.